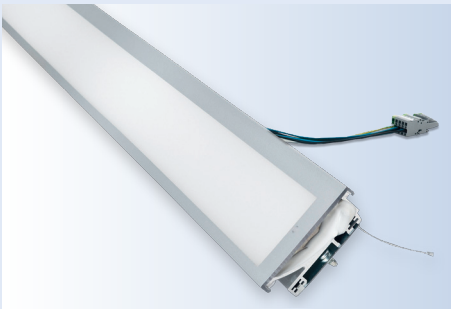


LED general illumination 143 515



Image: LED general illumination 143 515
front view



References

- Do Inno Ostnetz
- Do Inno Sachsen
- Do Inno Südhessen
- Do Inno Taunus
- Do Inno Baden-Württemberg



The LED module can be customized in light color and intensity of light. The classification in DZUS mount and LED module guarantees easy adjustment. The mount allows various inclinations of the light axis thru different completions.

Technical parameters

LED general illumination

Order no.:

143 515

Technical parameters

Design: aluminium extrusion housing
with diffuse PC-cover

Other technical data

Nominal voltage:	24 V DC
Input voltage range:	16,8 - 32 V DC
Current consumption:	5 - 22 W
Ambient temperature:	-25 °C to +70 °C
Dimensions:	100 x 60 mm (W x D), individual length, 300 -1400 mm
Light emission:	70 x (length - 45) mm
Light intensity:	> 180 lx, daylight white
Tests:	EN 50121 part 3-2 (current source) DIN EN 50155

Other nominal voltages available on request.

State: September 2008
Technical subject to change without notice.