

# Drivers desk-LED lamp 143 527

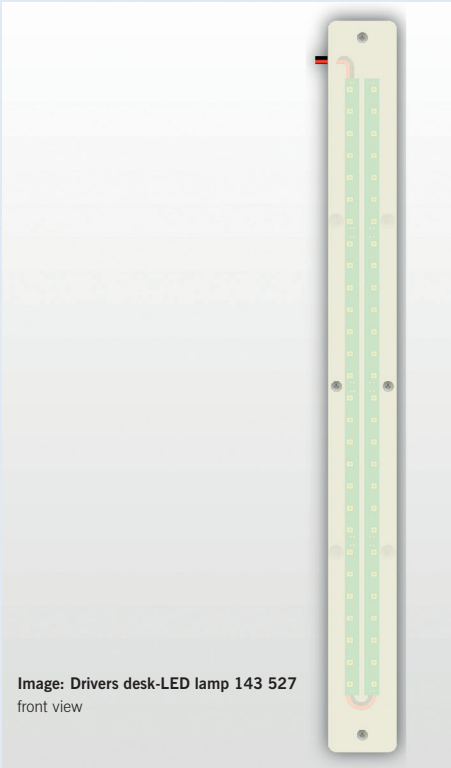


Image: Drivers desk-LED lamp 143 527 front view

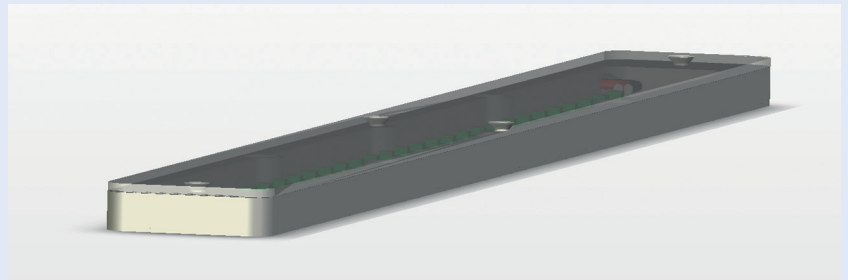
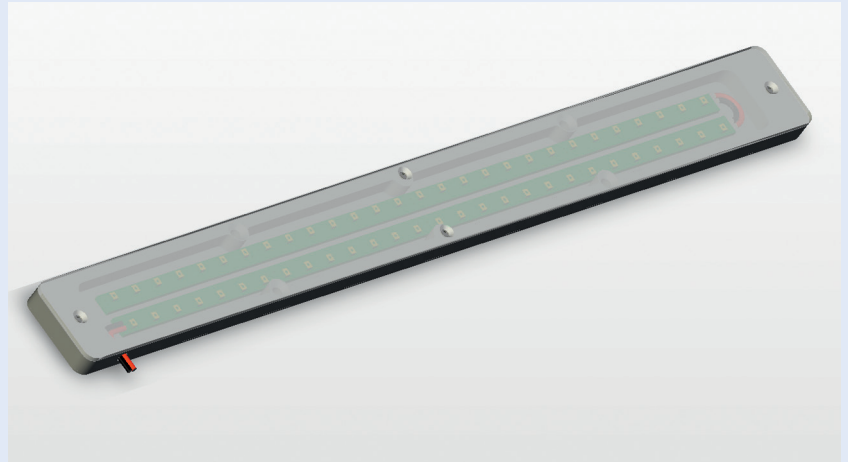


Image: Drivers desk-LED lamp 143 527 side view

## References

- Protos

The light is intended to be built under a desk cover, or assembled in casing. Their low height makes it easier for the covered installation. The housing is sealed, but the cover only screwed. A higher IP-safety class can be offered.

## Technical parameters

<b>Drivers desk-LED lamp</b>	<b>Order no.:</b>	<b>143 527</b>
------------------------------	-------------------	----------------

Technical parameters	
Design:	aluminium housing with polycarbonat cover

Other technical data	
Nominal voltage:	24 V DC
Input voltage range:	16,8 - 32 V DC
Current consumption:	0,2 A
Ambient temperature:	-25 °C to +70 °C
Dimensions:	length/width/height 40/425/10 mm
Light emission:	length/width 400/35 mm
Protection type:	IP 20

**Other dimensions available on request.**



Source: Heitmann

State: September 2008  
 Technical subject to change without notice.