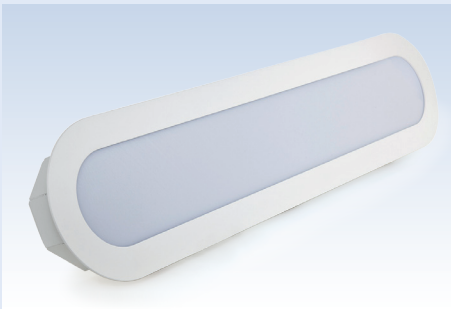
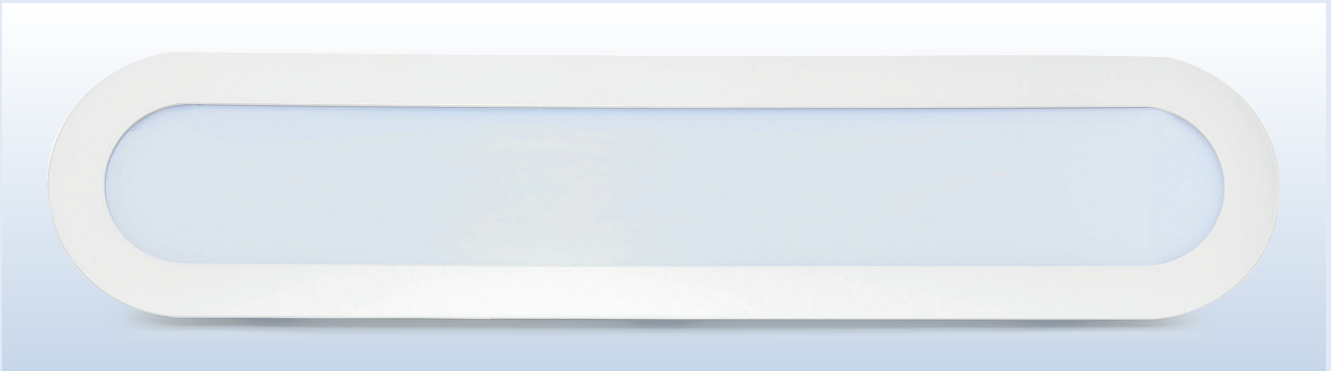


Cockpit ceiling LED lamp 143 552_54



The cover is inserted in a milled aluminium frame. The housing is put on and connected with the frame. In this housing are assembled LEDs. The current source for the supply of the LEDs is at the backside of the housing.

Image: Cockpit ceiling LED lamp 143 552_54
for Hamburger Hochbahn

 References

- Hamburger Hochbahn



State: September 2008
Technical subject to change without notice.

 Technical parameters

Cockpit ceiling LED lamp
Order no.:
143 552 54
Technical parameters

Design: milled aluminium frame with polycarbonate
and glass cover

Other technical data

Nominal voltage:	24 V DC
Input voltage range:	16,8 - 32 V DC
Current consumption:	1000 mA
Ambient temperature:	-25 °C to +70 °C
Dimensions:	length/width/height 680/155/35 mm
Light emission:	length/width 625/92 mm
Tests:	EN 50121-3-2 (current source) DIN EN 50155

Other nominal voltages available on request.