

Ceiling fitting light 143 567

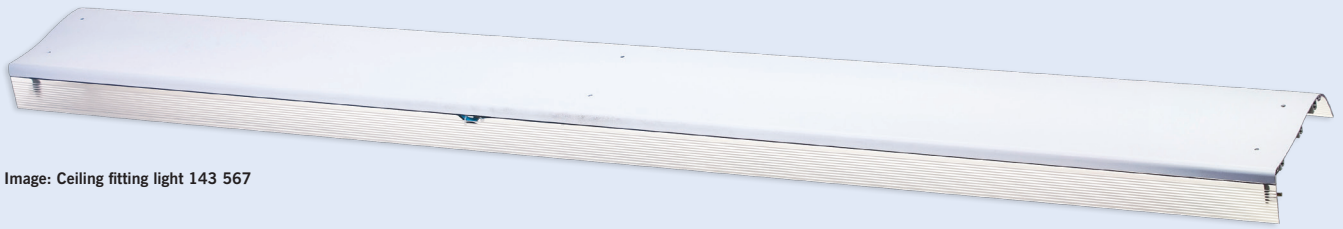
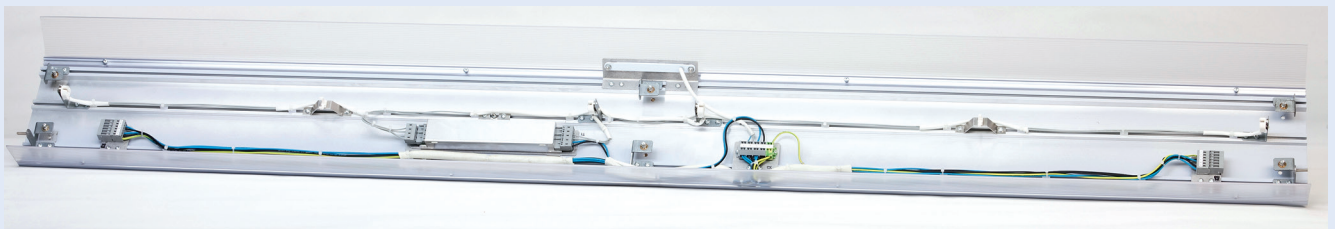


Image: Ceiling fitting light 143 567



Casing element for the side wall in the gateway area with integrated T5-fluorescent lamps and 2 light emissions for direct illumination of the corridor (lower light emission) and for the focused illumination of the ceiling area (upper light emission). A LED emergency light can be integrated optionally.

References

- Velaro D



State: September 2010
 Technical subject to change without notice.

Technical parameters

Ceiling fitting light	Order no.:	143 567
------------------------------	-------------------	----------------

Technical parameters	
Design:	Basic profile: extruded aluminium sheat 2 mm, coated
Sheeting:	upper light emission: PC-light lens 3 mm lower light emission: PC-light lens 3 mm

Other technical data	
Nominal voltage:	110 V DC
Input voltage range:	77 - 150 V DC
Dimensions:	length/width/height 2014/255/76 mm
Fire protection:	DIN 5510-2 / S4, SR2, ST2
Degree of protection:	IP 20

Light bulbs	(Not included in the scope of delivery!)
Fluorescent lamp T5, 2 x 21 W	

Lamp operating device
Electronic ballast 110 V DC / 2 x 21 W

Other dimension available on request.
Other nominal voltages on request.