

Lamp operating device DC converter P 56 110 201

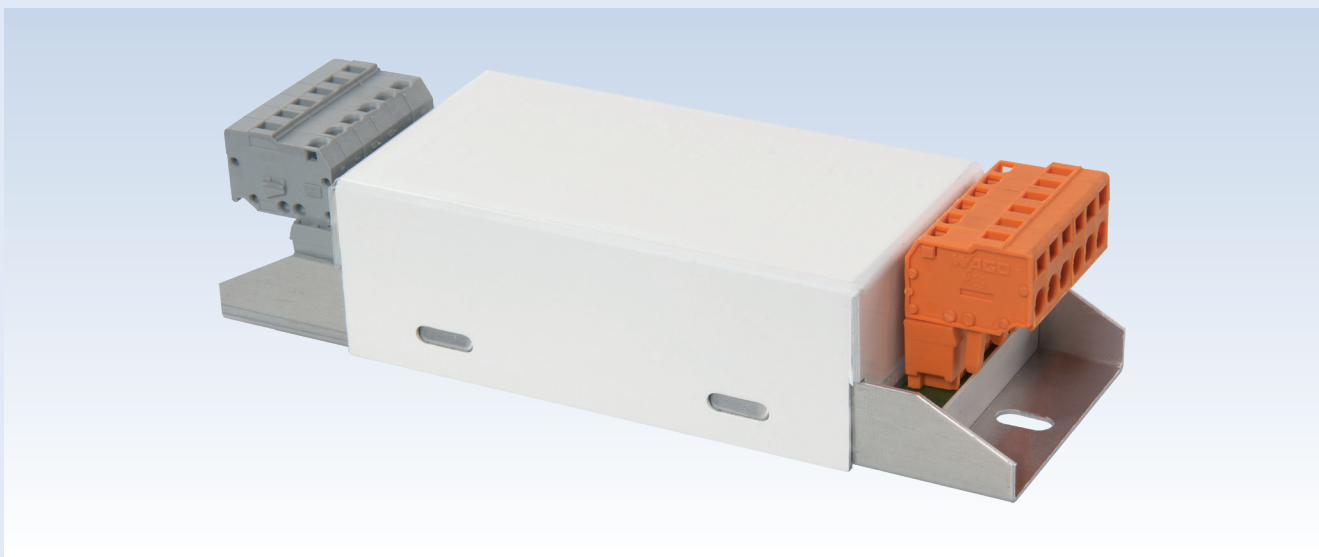


Image: Lamp operating device DC converter (closed) P 56 110 201

With a regulated DC voltage of 11,3 V a reliable and durable operation of halogen lamps with a maximum lamp power of 20 W will be guaranteed. The DC converter has comprehensive control and protective functions. It is characterized by special features such as voltage reversal protection at the input, a controlled output voltage and an automatic deactivation function in case of overloading.

Technical parameters

Lamp operating device DC converter

Order no.:

P 56 110 201

for halogen lamps

Technical parameters

Nominal voltage:	110 V DC
Input voltage range:	77 - 150 V DC
Input current:	max. 0,26 A
Output voltage:	11,3 V stabilised in the entire operating range
Output power:	1 x 20 W or 2 x 10 W
Temperature range:	-25 °C to +70 °C
Dimensions:	length/width/height 140/50/35 mm
Hole spacing:	130 mm
Tests:	EN 50155
	EN 50121-3-2

State: September 2010

Technical subject to change without notice.