

Tread light P 18 200x

Image: Tread light P 18 200x
back view

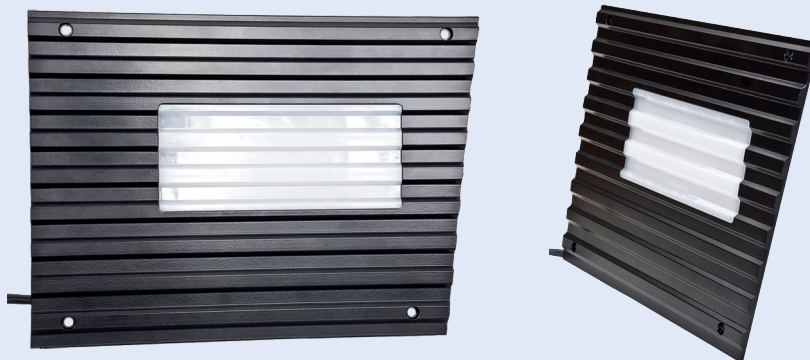
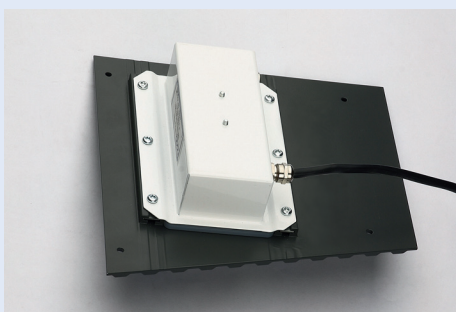
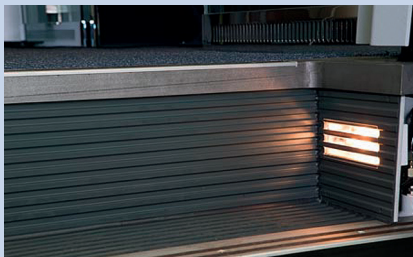


Image: Tread light P 18 200x
front view and side view

At the front of the step light is situated powder-coated aluminium facing board with an integrated polycarbonate cover pane. The coated casing is firmly screwed to furrow plates at the back. The casing integrates the complete wiring as well as the light bulb.

References

- ICT 2 Option / ICE 3 Option
Option for illumination of the entrance area



State: September 2010
Technical subject to change without notice.

Technical parameters

Tread light

Technical parameters

Design:	facing board: coated aluminium profile
	casing: coated sheet, reflector
	cover pane: polycarbonate

Other technical data

Dimensions:	length/width/height 271 - 198/53/224 - 184 mm
Fire protection:	DIN 5510-2 (cover pane)
Degree of protection:	IP 54

Light bulbs

Halogen lamp Osram „DECOSTAR“, 2 x 10 W / CFL / LED

Lamp operating device

DC converter	24 V DC / 20 W
DC converter	110 V DC / 20 W

Parameter

Entrance at the end – left side	Order no.:	P 18 2001
Entrance at the end – right side	Order no.:	P 18 2002
Entrance in the middle – left side	Order no.:	P 18 2003
Entrance in the middle – right side	Order no.:	P 18 2004