

LED tail light (red) 142 404 60



Image: LED tail light (red) 142 404 60
closed casing

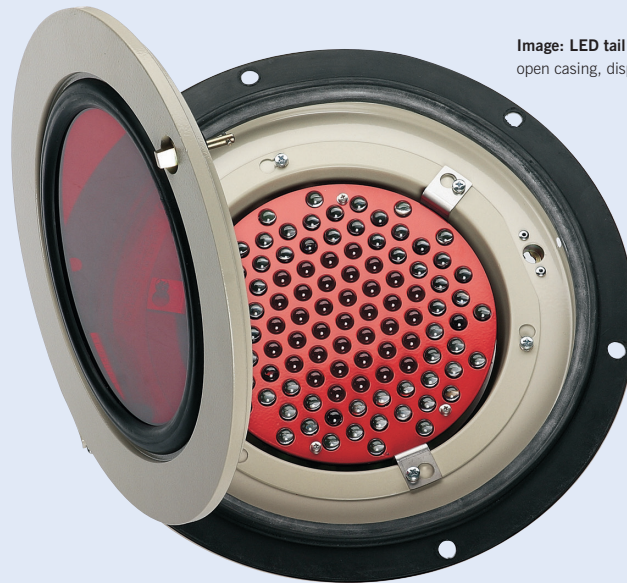


Image: LED tail light (red) 142 404 60
open casing, display of LED unit

References

- Deutsche Bahn AG
- Do Inno Sachsen
- Do Inno Baden-Württemberg
- Do Inno Taunus
- Do Inno Südhessen



Do Inno Sachsen



The LED - train rear light consists of a powder-coated casing ring which is firmly connected to a reflector and an integrated compact LED unit (signal red). A cast ring (powder-coated) with an integrated polycarbonate cover serves as exterior finish.

Technical parameters

LED tail light (red)	Order no.:	142 404 60
-----------------------------	-------------------	-------------------

Technical parameters	
Design:	powder-coated steel sheet casing ring with reflector and socket angles
	cover: powder-coated cast ring with integrated red acrylic glass pane

Other technical data	
Nominal voltage:	24 V DC
Input voltage range:	16,8 - 32 V DC
Ambient temperature:	-25 °C to +70 °C
Dimensions:	length/width/height 332/332/120 mm
Light intensity:	80 cd
Fire protection:	DIN 5510
Degree of protection:	IP 55
Tests:	UIC 532
	EN 50155

Light bulb	
	Compact red LED unit consisting of 15 segments, 8 W

State: September 2010
Technical subject to change without notice.